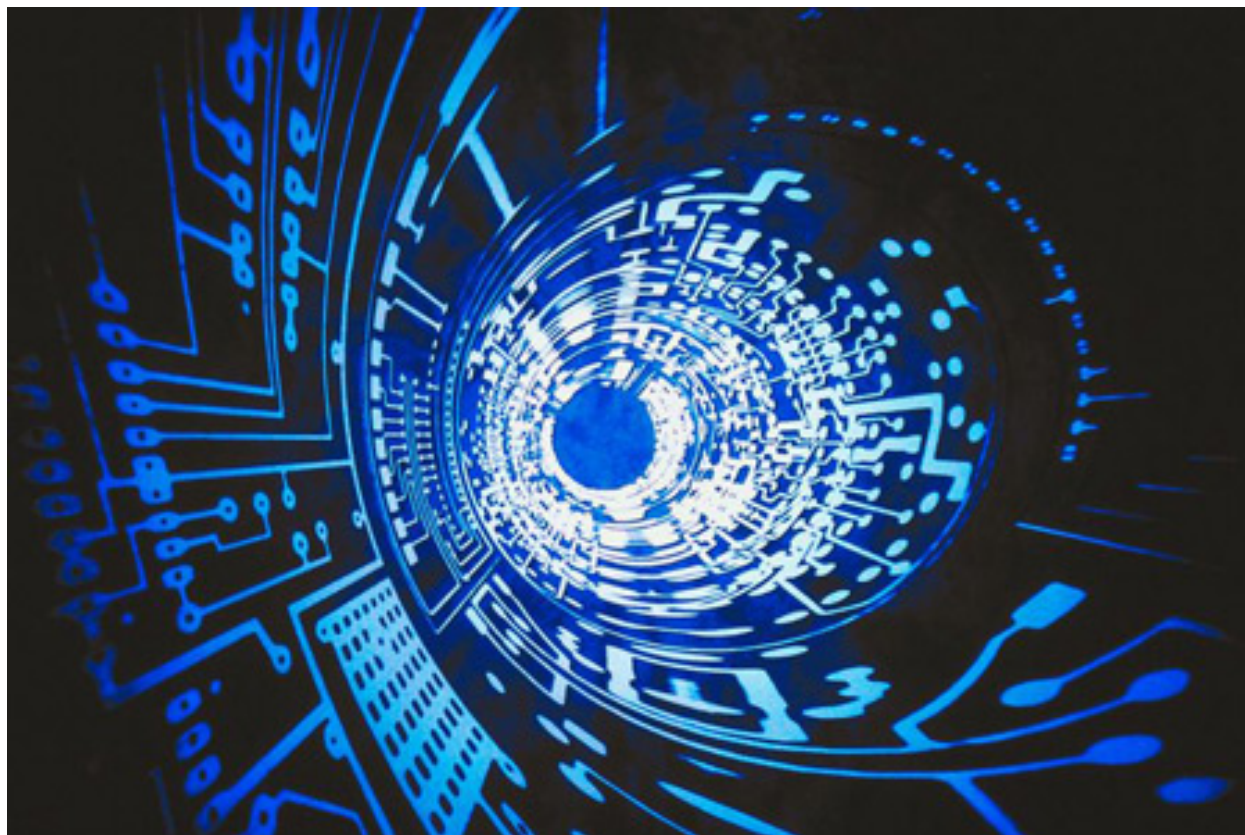


# Computer Maintenance Technology



[Explore Catalog Search Courses](#)

The Lee College Computer Maintenance Technology Program is designed to prepare students for entry-level employment into computer associated electronic careers.

The curriculum is designed to provide students with a firm foundation in electronics fundamentals and a background in digital systems. Both a certificate of completion and an associate of applied science degree are available.

## What Will I Learn?

Upon successful completion of all Computer Maintenance Technology certificate program graduates will be able to:

- Differentiate and understand the role and function of various current and emerging technologies, including, but not limited to, computer hardware and networking.
- Describe basic computer organization and the relationship between hardware components and the operating system.
- Differentiate and apply the basic technologies used in local- and wide-area networks.
- Demonstrate skills in installation, configuration, maintenance, troubleshooting, and upgrade of computer operating systems at both the workstation and server levels.
- Demonstrate competency in installing, repairing, servicing, troubleshooting, and upgrading computers and peripheral equipment from the PC technician's point of view.

- Demonstrate proficiency in installation, maintenance, upgrade, and troubleshooting of computer operating systems from the PC technician's point of view.

## What Can I Do with This Course of Study?

Graduates of this program may be employed as computer support specialists, field service representatives, research and laboratory technicians, and frequently as computer and networking engineers. Some of the work tasks may include technical assistance, support, design, and testing of computers and network systems.

Actual work settings depend on the type of work of specialty of the technician or computer engineer. Job opportunities exist in manufacturing companies, public utilities, business and engineering consulting firms, and government agencies.

## AAS: Computer Maintenance and Networking

**Foundations: These are the courses students need in order to progress in their career/college pathway, as they either provide a certificate or lay the groundwork for moving to the next set of courses.**

Course	Course Title	Counts Toward Certificate
BCIS 1305	Business Computer Applications	MT1, NET1
CPMT 1411	Introduction to Computer Maintenance	MT1, NET1
ITCC 1414	Introduction to Networks	MT1, NET1
TECM 1349	Technical Math Application	MT1, NET1
CPMT 2449	Advanced Computer Networking Technology	MT1, NET1
ITSC 1416	Linux Installation and Configuration	MT1, NET1
ITSY 1442	Information Technology Security	MT1, NET1

**Knowledge Building: These courses further the students' knowledge in the area of study and increase their preparation for the degree completion.**

Course	Course Title	Counts Toward Certificate
ITCC 1408	Introduction to Voice over Internet Protocol (VoIP)	MT1, NET1
IMED 1316	Web Design 1	NET1
ITNW 1425	Fundamentals of Network Technology	NET1
ITNW 2412	Routers	NET1
ITNW 2453	Advanced Routing and Switching	NET1
ITMT 1457	Administering a Windows Operating System	NET1

This course completes the NET1 certificate and meets the capstone requirement for the degree.

ITSE 1402 Computer Programming

**Completion: These are the courses the student needs to complete the degree plan and prepare to enter the workforce.**

Course	Course Title	Counts Toward Certificate
ITDF 1300	Introduction to Digital Forensics	
MATH 1314	College Algebra	
ENGL 2311	Technical Writing	
SPCH 1311	Introduction to Speech Communication	
GOVT 2305	Federal Government	
ENGLISH 1301	English Composition 1	
CPMT 2488 Or ITMT 1457	Internship: Computer Installation and Repair Technology Or Administering a Windows Operating System *Students who have completed ITMT 1457 do not need to take CPMT 2488 for the degree.	

### **MT1: Certificate of Completion — Computer Maintenance Technology**

**Foundations: These are the courses students need in order to progress in their career/college pathway, as they either provide a certificate or lay the groundwork for moving to the next set of courses.**

Course	Course Title	Counts Toward Certificate
BCIS 1305	Business Computer Applications	MT1
CPMT 1411	Introduction to Computer Maintenance	MT1
ITCC 1414	Introduction to Networks	MT1
TECM 1349	Technical Math Application	MT1
CPMT 2449	Advanced Computer Networking Technology	MT1
ITSC 1416	Linux Installation and Configuration	MT1

ITSY 1442	Information Technology Security	MT1
-----------	---------------------------------	-----

**Knowledge Building: These courses further the students' knowledge in the area of study and complete the certificate.**

Course	Course Title	Counts Toward Certificate
ITCC 1408	Introduction to Voice over Internet Protocol (VoIP)	MT1

## **NET1: Certificate of Completion — Network Maintenance Technology**

**Foundations: These are the courses students need in order to progress in their career/college pathway, as they either provide a certificate or lay the groundwork for moving to the next set of courses.**

Course	Course Title	Counts Toward Certificate
BCIS 1305	Business Computer Applications	NET1
CPMT 1411	Introduction to Computer Maintenance	NET1
ITCC 1414	Introduction to Networks	NET1
TECM 1349	Technical Math Application	NET1
CPMT 2449	Advanced Computer Networking Technology	NET1
ITSC 1416	Linux Installation and Configuration	NET1
ITSY 1442	Information Technology Security	NET1

**Knowledge Building: These courses further the students' knowledge in the area of study and complete the certificate.**

Course	Course Title	Counts Toward Certificate
ITCC 1408	Introduction to Voice over Internet Protocol (VoIP)	NET1
IMED 1316	Web Design I	NET1
ITNW 1425	Fundamentals of Network Technology	NET1
ITNW 2412	Routers	NET1
ITNW 2453	Advanced Routing and Switching	NET1
ITMT 1457	Administering a Windows Operating System	NET1

[CAREERS IN THIS FIELD](#)  
[My Next Move](#)

▪  
[Live Chat](#)

## **Contact Info.**

Charles Ganze  
TV1, Room 110  
281.425.6246  
[cganze@lee.edu](mailto:cganze@lee.edu)

Santiago Guardiola  
TV1, Room 108  
281.425.6467  
[sguardiola@lee.edu](mailto:sguardiola@lee.edu)

[Contact an advisor/counselor](#)